



A World of CARE - Fiscal Year 2016

Contributing to saving lives, defeating poverty and achieving social justice

80,120,323

people directly reached through 1,044 poverty-fighting development and humanitarian aid projects and initiatives.

255,954,737

people indirectly benefiting from CARE's projects and initiatives, through policy changes, replication of successful programs by partner organizations and governments, and scale up of innovations.

94 Countries

962 Development and humanitarian aid projects

82 Development and humanitarian initiatives (non-project actions: advocacy, research and other)

9,175 Staff

764 Development projects and initiatives

69,855,990

58,309,072 (FY15)



233,212,705

209,781,783 (FY15)



Direct participants



Indirect participants

371 Humanitarian aid projects and initiatives

11,632,688

10,066,893 (FY15)



28,718,595

9,865,896 (FY15)

Reach by region

	FY	# Projects-initiatives	Direct participants	Indirect participants
East & Central Africa	FY16	200	9,086,533	31,237,244
	FY15	153	9,214,737	11,850,892
West Africa	FY16	137	5,072,468	32,796,451
	FY15	114	7,882,630	7,718,228
Southern Africa	FY16	80	4,640,456	7,079,169
	FY15	69	1,925,534	4,911,670

	FY	# Projects-initiatives	Direct participants	Indirect participants
Asia & Pacific	FY16	329	56,738,386	171,258,670
	FY15	315	43,992,815	178,911,450
Latin America & Caribbean	FY16	93	965,705	8,449,818
	FY15	92	632,157	8,041,618
Middle East, North Africa & Europe	FY16	194	3,616,754	5,133,376
	FY15	144	1,688,404	1,708,320
North America	FY16	11	21	-

Top 10 countries: direct - indirect participants

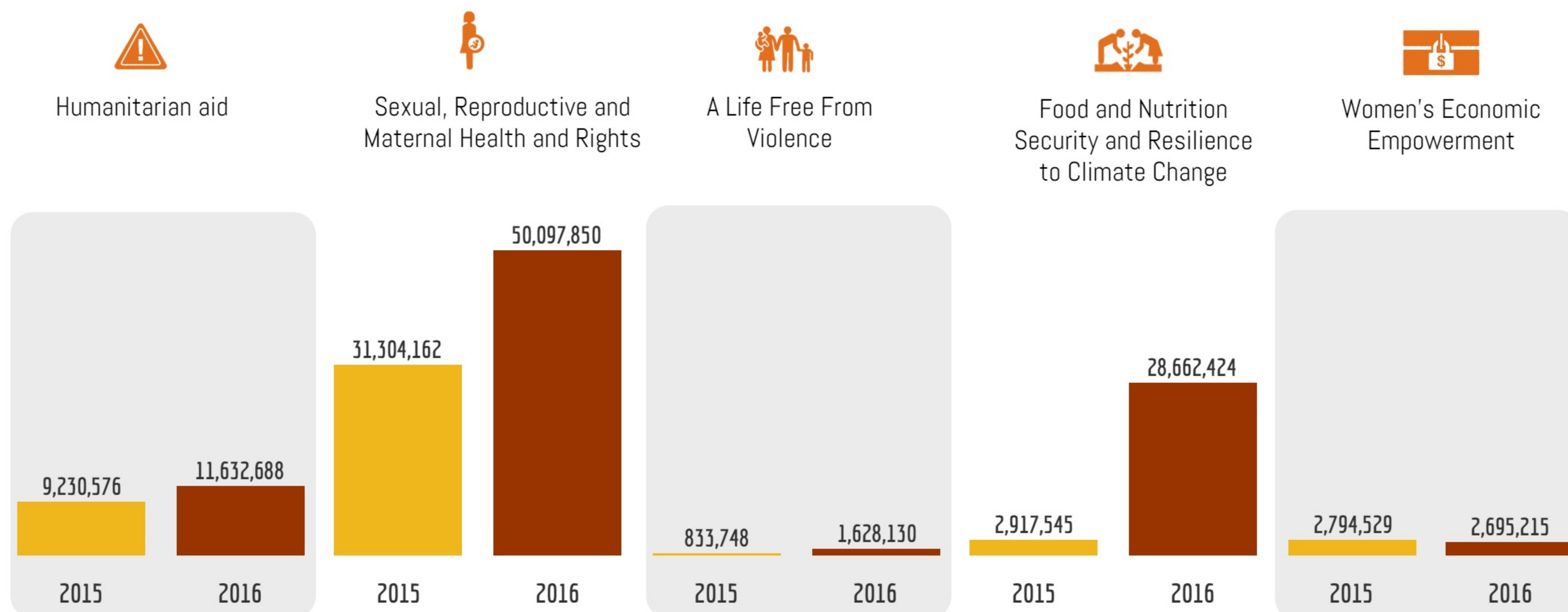
1. India	39,847,921
2. Bangladesh	13,068,519
3. Kenya	1,870,808
4. Zambia	1,682,181
5. Ethiopia	1,603,857
6. Malawi	1,562,597
7. Mali	1,467,426
8. Sudan	1,404,052
9. Yemen	1,323,801
10. Syria	1,267,300



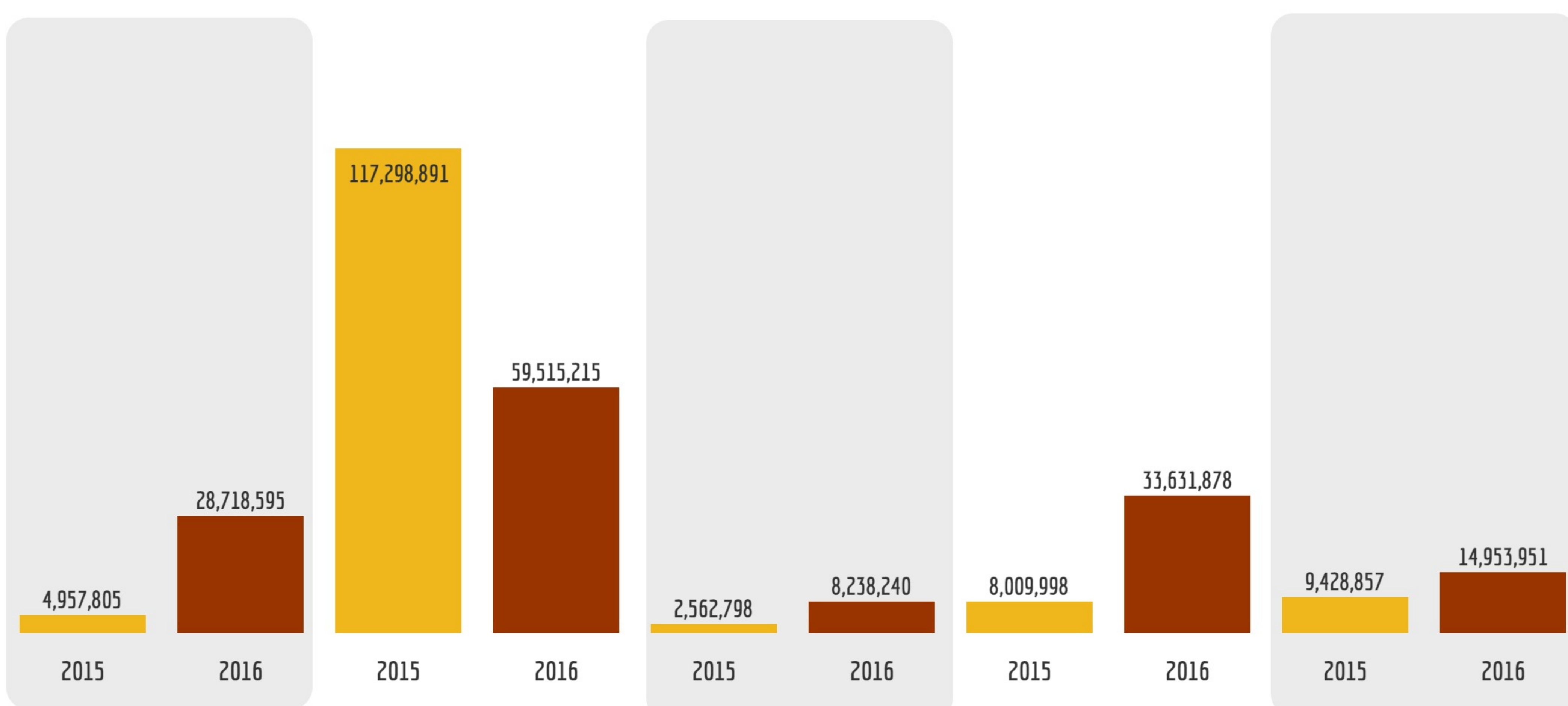
1. India	116,539,369
2. Bangladesh	37,619,839
3. Kenya	11,638,509
4. Sri Lanka	11,103,520
5. Niger	10,690,417
6. Mali	10,270,754
7. Peru	4,851,745
8. Uganda	3,677,313
9. Zambia	3,255,877
10. Democratic Republic of the Congo	2,684,098

CARE 2020 Program Strategy Outcomes

Direct Reach by Outcome Area

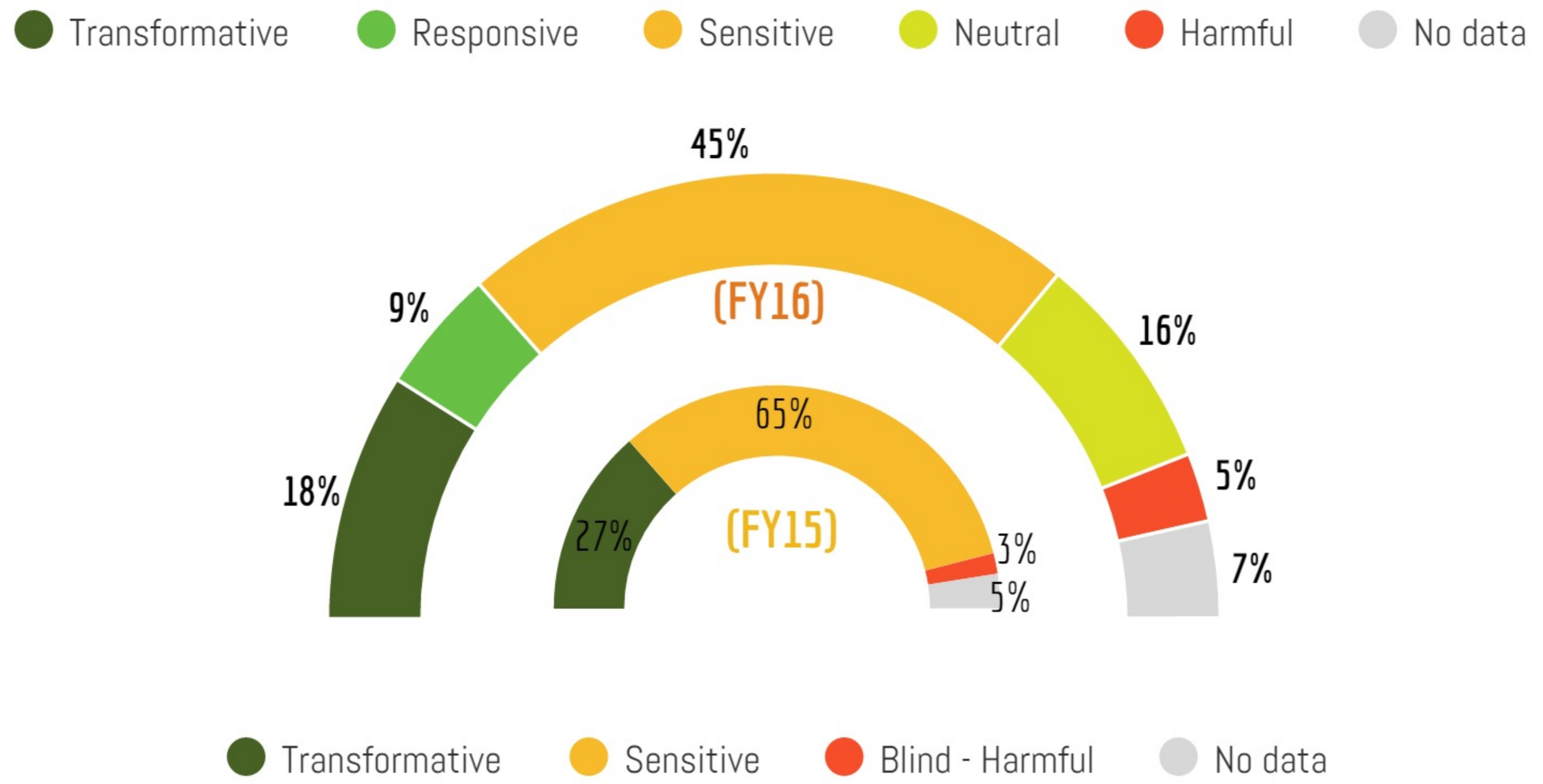


Indirect Reach by Outcome Area

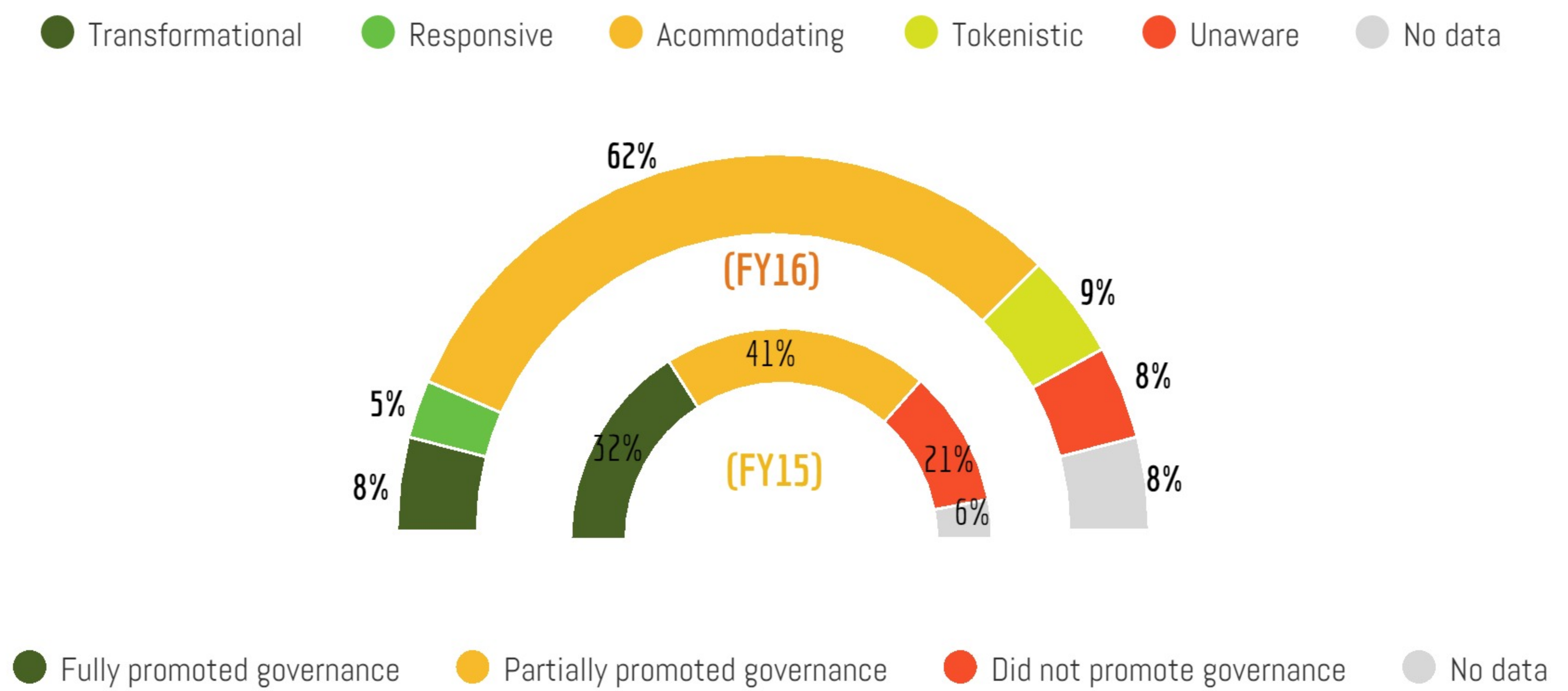


CARE 2020 Program Strategy Approach

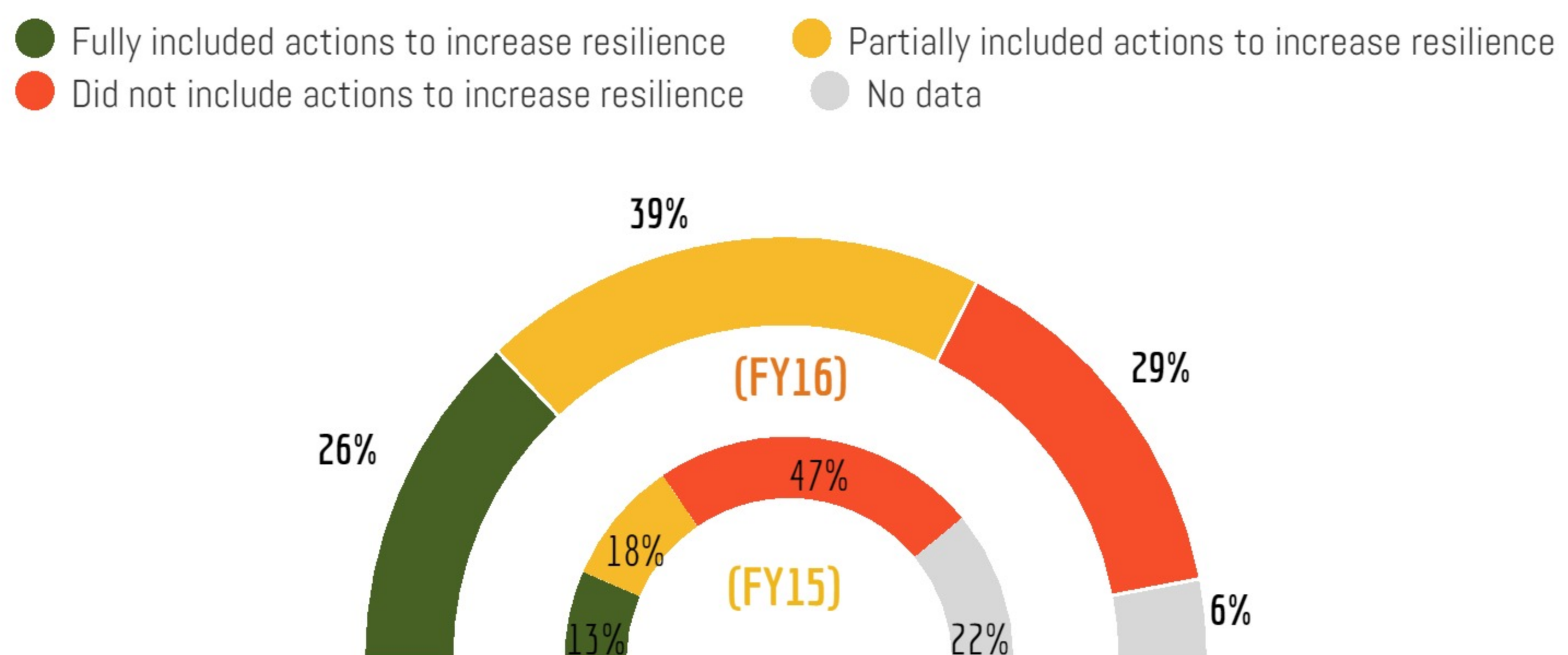
Gender Integration



Governance Integration



Resilience Integration



CARE 2020 Program Strategy - Multiplying Impact

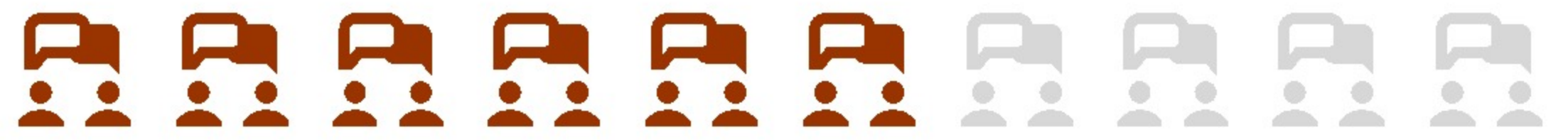
62% of all projects/initiatives fully and moderately engaged in Advocacy



56% of all projects/initiatives tested new ways for fighting poverty





57% of all projects/initiatives took tested and effective solutions to scale, either through linking and working with strategic alliances or on their own

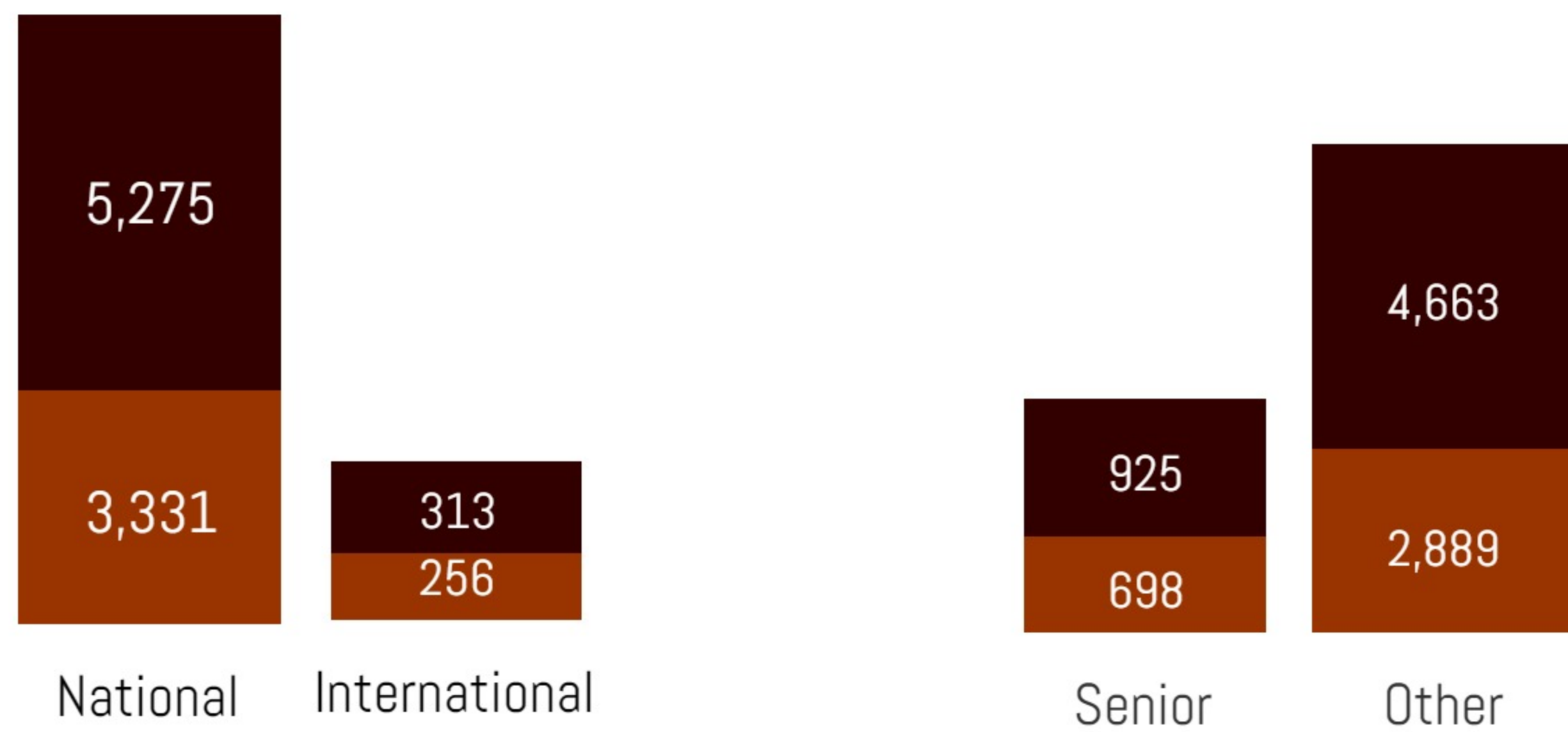



300,000,000 views
#DearDaddy
 Movie about violence against women and girls
 CARE Norway

CARE staff around the world



• 5,588 men   • 3,587 women



For more information...



- Sofía Sprechmann - CI Program Director (sprechmann@careinternational.org)
- Ximena Echeverría Magariños - M&E Coordinator (echeverria@careinternational.org)